



## Esri Maps for SharePoint 3.0.1 Multilingual Support

Version 3.0.1 of Esri Maps for SharePoint is supported in 22 languages – Arabic, Chinese (Simplified), Danish, Dutch, English, Estonian, French, German, Hebrew, Italian, Japanese, Korean, Latvian, Lithuanian, Norwegian, Polish, Portuguese, Portuguese (Brazilian), Romanian, Russian, Spanish, and Swedish. English is supported natively with the product installation. So when Esri Maps for SharePoint version 3.0.1 is deployed by running the Esri Maps for SharePoint setup, text within the Esri Maps for SharePoint components will be displayed in English by default. All other languages are supported using a language pack model. To enable the display of any supported non-English language, the language pack for that language must be deployed on top of the main Esri Maps for SharePoint deployment.

Each language pack is distributed as a SharePoint solution package (wsp file). Language packs for any number of locales may be deployed on top of Esri Maps for 3.0.1, so that, as with SharePoint itself, one Esri Maps for SharePoint installation may support multiple languages. Within SharePoint, languages can be defined at the page, site, or site collection level. The Map Web Parts will reflect the language of the containing page, while the Esri Maps Locate Workflow and Esri Maps Location Field will reflect the language of the containing site. By default, the language of a page or site in SharePoint is inherited from the parent site or site collection.

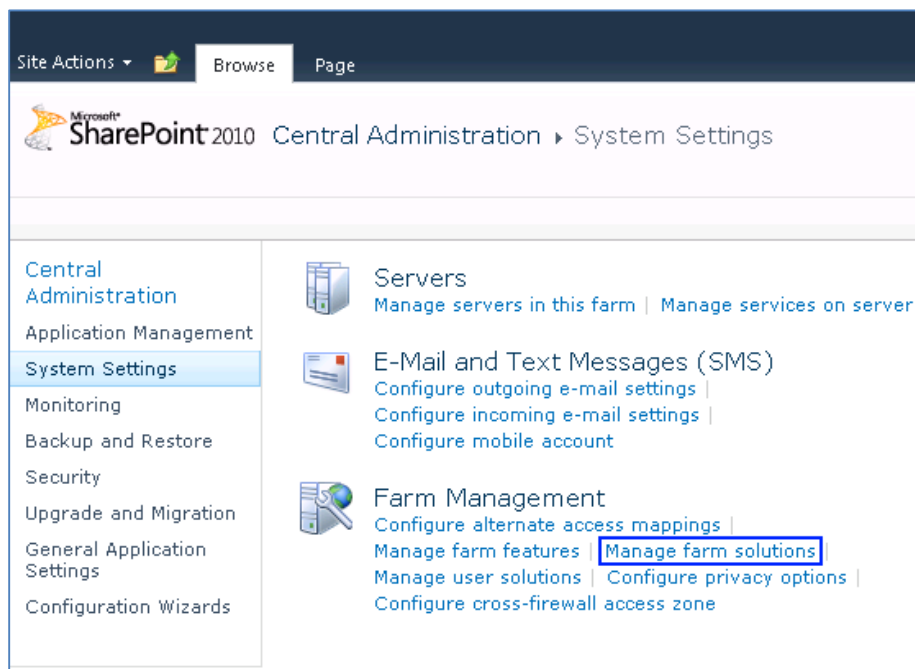
### Language Pack Deployment

To deploy an Esri Maps for SharePoint language pack, follow the steps below.

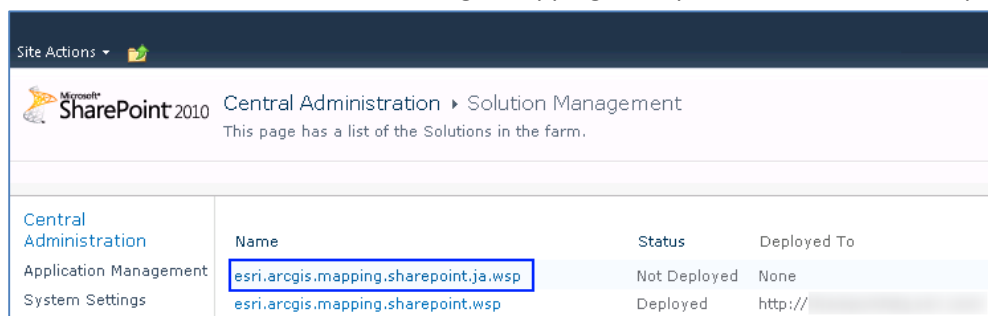
**Note** – Version 3.0.1 of Esri Maps for SharePoint must be installed before installing any language packs.

1. Save the SharePoint solution package (.wsp file) containing the Esri Maps for SharePoint language pack on the server where SharePoint is installed. Note this location for use in Step 4.
2. Make sure the SharePoint Administration and SharePoint Timer services are running on the server.
3. Open the SharePoint Management Shell. The SharePoint Management Shell can be found under Start → All Programs → SharePoint 2010 (or 2013) Products. If User Access Control (UAC) is enabled, make sure to open the command prompt with administrative privileges.
4. In the SharePoint Management Shell, execute the following command:  
`stsadm -o addsolution -filename "<path to language pack wsp file>"`
5. Once the solution has been added, open the SharePoint Central Administration site in a web browser.
6. On the Central Administration site home page, click the "System Settings" heading

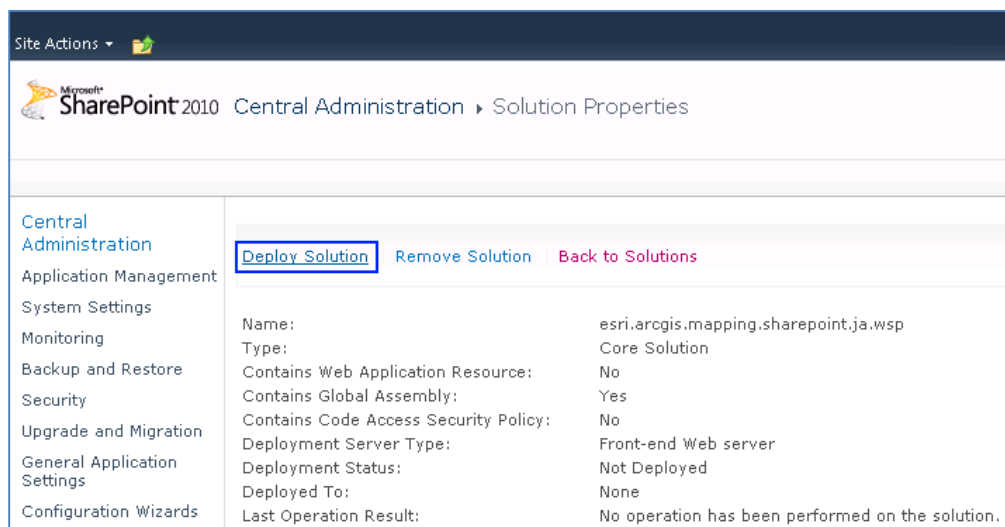
7. On the System Settings page, click “Manage farm solutions”



8. On the Solution Management page, click the name of the wsp file that contains the language pack. The file name will be in the format esri.arcgis.mapping.sharepoint.<culture code>.wsp



9. On the Solution Properties page, click “Deploy Solution”



10. On the Deploy Solution page, click the OK button:

The screenshot shows the 'Deploy Solution' page in SharePoint 2010 Central Administration. The left sidebar contains navigation links: Central Administration, Application Management, System Settings, Monitoring, Backup and Restore, Security, Upgrade and Migration, General Application Settings, and Configuration Wizards. The main content area is divided into three sections: 'Solution Information', 'Deploy When?', and 'Deploy To?'. The 'Solution Information' section shows the solution name 'esri.arcgis.mapping.sharepoint.ja.wsp', locale '0', and deployment status 'None'. The 'Deploy When?' section offers two options: 'Now' (selected) and 'At a specified time' (with a date/time picker set to 3/2/2012 at 2 PM 00). The 'Deploy To?' section states the solution deploys globally and includes a red warning: 'Warning: Deploying this solution will place assemblies in the global assembly cache. This will grant the solution assemblies full trust. Do not proceed unless you trust the solution provider.' At the bottom right, there are 'OK' and 'Cancel' buttons, with the 'OK' button highlighted by a red rectangle.

11. Using a command prompt, restart IIS on the SharePoint server by issuing the following command:

```
iisreset
```

Once the solution has been deployed, Esri Maps for SharePoint components will automatically be displayed using the language contained within the language pack, provided that the page, site, or site collection containing those components are also set to that language.

**Note** – Map Web Parts that have been configured and saved prior to deployment of the language pack will not reflect the new language. The new language will only apply to Map Web Parts that are created after deployment of the language pack.