



Welcome to Esri Maps for SharePoint!

Esri Maps for SharePoint 4.0 contains the Esri Maps Web Part, the Esri Maps Location Field, the Esri Maps Locate Workflow, and the Esri Maps Connect Workflow. Refer to the [Esri Maps for SharePoint Community](#) to discover how to use these components.

Basic information on the prerequisites and installation of Esri Maps for SharePoint is included below. You can also find this information in the Install and Configure section of the [Esri Maps for SharePoint 4.0 help](#).

Enjoy!  
Esri Maps for SharePoint Team

## **Prerequisites**

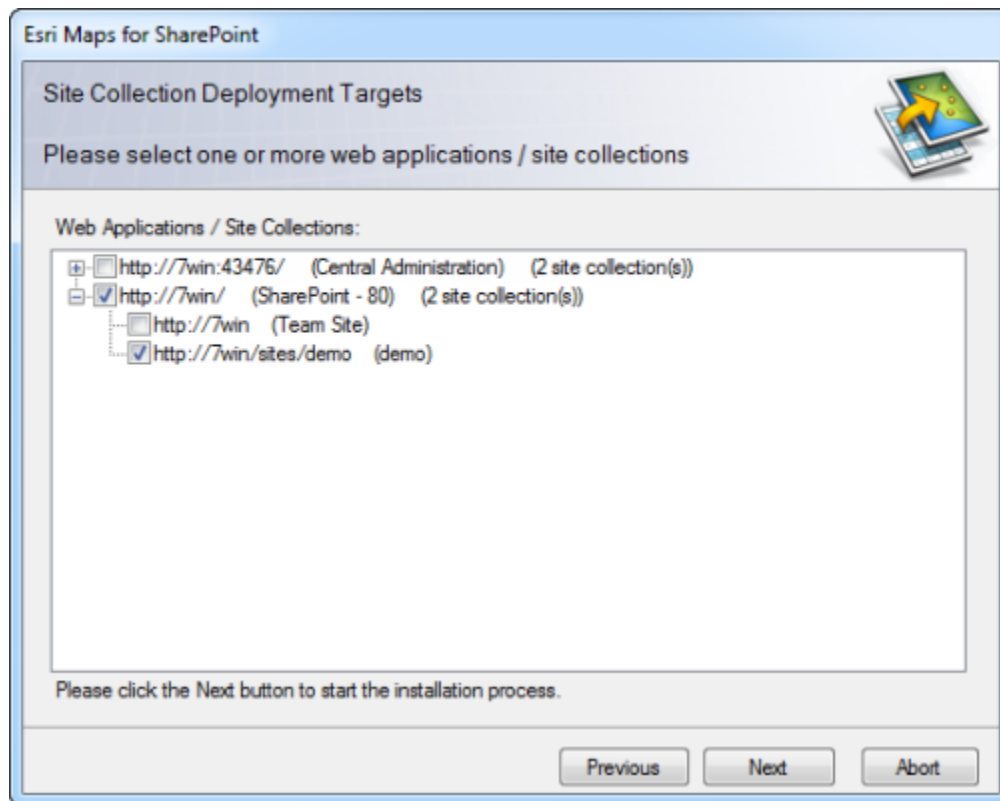
Before installing Esri Maps for SharePoint, the following prerequisites must be met:

1. Installation of the Microsoft .NET Framework 3.5, along with service pack 1.
2. Installation of one of the following:
  - Microsoft SharePoint Server or Foundation 2010
  - Microsoft SharePoint Server or Foundation 2013
  - Microsoft SharePoint Online
3. Creation of at least one SharePoint Web Application.
4. Inclusion of Silverlight MIME types in IIS configuration if using the Silverlight-based ArcGIS Map Web Part. If necessary, use [Microsoft's Configuring IIS for Silverlight Applications](#) document as a guide. If you are using IIS version 7 or later, the Silverlight MIME types are included by default.

# Install and deploy Esri Maps for SharePoint on-premises

Follow these steps to deploy Esri Maps for SharePoint:

1. Download and extract the contents of the Esri Maps for SharePoint installation ZIP file.
2. Right-click the Setup.exe file and click **Run as Administrator** to begin the installer. The installer performs a series of checks to ensure that the installation will be successful. If a check fails, the installer provides information about the failure.
3. Once the checks have completed successfully, click **Next**. If you receive a message that the Secure Store Service has not been started you must start this service on your SharePoint server (not applicable for SharePoint Foundation).
4. Read the End User License Agreement (EULA). If you agree to the terms of the EULA, click the check box and click **Next**.
5. Choose the web applications or site collections on which to enable Esri Maps for SharePoint. In the **Web Applications / Site Collections** tree, each top-level node represents a SharePoint web application, while each child node represents a site collection. In the following screen capture, Esri Maps for SharePoint is being targeted for deployment to the site collection located at <http://7win/sites/demo>. Once you have selected the target web applications and site collections, click **Next**.



Note: If you target a web application, the Esri Maps for SharePoint feature will be available to all site collections within that web application. Therefore, for site collections that are not checked on this installer page but are within web applications that are checked, the Esri Maps for SharePoint feature will be available but not activated.

6. Once the operation is complete, click **Next** to view a log of the operations or Close to close the setup program.

## Configure Esri Maps for SharePoint

Prerequisite: You must be a site collection administrator to access the Esri Maps for SharePoint administration menu.

Esri Maps for SharePoint must be configured before it can be used for the first time. The configuration process enables an app ID to be created for use with the Esri Maps Web Part, the Locate and Connect Workflows and the Esri Maps Location field. This app ID

identifies your app to the platform based on OAuth 2.0. The app ID is also the foundation for distributing apps, accessing billable services, and getting usage reports. To learn more about authentication and OAuth 2.0, see [ArcGIS for Developers](#).

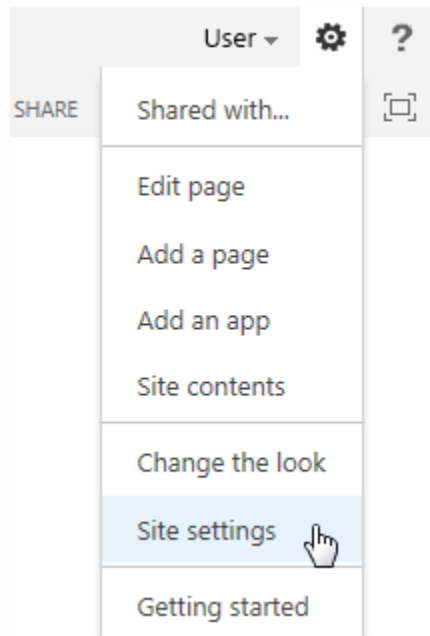
Note: You do not need to manually create an AppID; it is created by the Esri Maps for SharePoint application.

Configuration of Esri Maps for SharePoint requires the credentials of a single user from the organization. The credentials entered during the configuration process are used to charge credits consumed by the Locate and Connect Workflows and by the Esri Maps Location field. The user account used for configuration requires the following:

- Permissions within the organization to geocode. By default, Users, Publishers, and Administrators have permissions to geocode, but a user may belong to a custom role where this permission was removed. See [ArcGIS roles](#) for more information.
- Ownership of hosted services selected as a custom location type in the Locate Workflow.
- The ability to use organization credits as needed for geocoding. See the [Service Credits Overview](#) for more information.

### Set the ArcGIS Connection URL

1. Navigate to the **Site Settings** page of the site.
2. Under the **Esri Maps for SharePoint Administration** heading, click **Configuration Settings**.



3. Edit the value of the **ArcGISConnection** list item to point to your Portal for ArcGIS or ArcGIS Online instance. If you are connecting directly to ArcGIS Online (meaning your instance has no subdomain), leave the default setting of [www.arcgis.com](http://www.arcgis.com).

## Esri Maps Configuration Settings ⓘ

⊕ new item or edit this list

All Items ...

✓	Title	Value
	AllowSignInOverHttpProxy ⓘ	... False
	ArcGISConnection ⓘ	... <a href="http://www.arcgis.com">http://www.arcgis.com</a>
	ArcGISProxy ⓘ	...
	EsriMapsProxy ⓘ	... proxy.ashx
	BingKey ⓘ	...
	GeometryService ⓘ	... <a href="http://tasks.arcgisonline.com/ArcGIS/rest/services/Geometry/GeometryServer">http://tasks.arcgisonline.com/ArcGIS/rest/services/Geometry/GeometryServer</a>

## Set the App Configuration credentials

The App Configuration credentials are used to charge credits consumed by the Locate and Connect Workflows, and by the Esri Maps Location field.

1. Navigate to the **Site Settings** page of the site.
2. Under the **Esri Maps for SharePoint Administration** heading, click **App Configuration**.

# Esri Maps App Configuration

## App Configuration

This allows you to access the Esri Maps Apps. It is also used for the Esri Maps Locate workflow and the Esri Maps Location field to consume necessary credits from your ArcGIS organization. These credentials will be used across all Esri workflows.

### Set ArcGIS credentials below to use Esri Maps Apps *(required)*

Set Credentials

Username: *Not set*

These credentials will be used for service credit consumption across all Esri workflows.

## Guest Access

This will allow members of your organization to view maps without signing in to ArcGIS. All features that consume organization credits will use these credentials. Certain features that require a user to sign in, such as sharing, will be disabled.

Enable guest access

Enable


*Disabled*

For more information about app configuration please visit our [Help Documentation](#).

3. Under the **App Configuration** section click **Set Credentials**

Esri Maps For SharePoint Locate Workflow wants to access your account information

**Sign In**



**Username**


**Password**

☒ Keep me signed in

[Forgot username or password?](#)

[Sign in with your enterprise login](#)

Esri Maps For SharePoint  
Locate Workflow developed  
by:



ArcGIS Test

Note:

- If you are using Internet Explorer and the **Sign In** window appears but is blank, try the following:
  1. In the Internet Explorer **Internet Options** dialog box, select the **Security** tab and select **Trusted Sites**.
  2. Check **Enable Protected Mode**.
  3. Click the **Sites** button and add [https://\\*.arcgis.com](https://*.arcgis.com) or your portal.
  4. Restart Internet Explorer.
- If you receive the following message: "Unable to obtain master key," follow the steps below to generate a key within the SharePoint Secure Store service:
  1. On the **Central Administration** home page, in the **Application Management** section, click **Manage service applications**.
  2. Click the **Secure Store Service** link.
  3. Click **Generate New Key**.
- Portals for ArcGIS configured with SAML will need to sign into App Configuration using a built-in user and then change the credentials to then sign in using the SAML username and password.

- Use Firefox or Chrome when setting the App Configuration credentials on SharePoint 2010 for IWA, PKI or LDAP portals.

4. Enter the appropriate credentials and click **OK**.

After entering these credentials, users are still prompted to enter their own credentials when using the Esri Maps Web Part. The credentials they enter on the web part can be persisted for the browser session. Once the browser closes, they must reenter their credentials.

### **Set the Guest Access credentials (optional)**

Sometimes you may want members of your organization to view the Esri Maps Web Part without signing into ArcGIS. To do so, you can set the Guest Access credentials. Features that consume organizational credits will be charged against the account that you set here. Users signed in as a guest will have limited access to the Esri Maps Web Part and will need to sign in using a named user account to share maps and layers to the organization.

1. Navigate to the **Site Settings** page of the site.
2. Under the **Esri Maps for SharePoint Administration** heading, click **App Configuration**.
3. Under the **Guest Access** heading, click **Enable**.



#### 4. Click Set Credentials

##### Guest Access

This will allow members of your organization to view maps without signing in to ArcGIS. All features that consume organization credits will use these credentials. Certain features that require a user to sign in, such as sharing, will be disabled.

Enable guest access

Disable

*Enabled*

##### Set ArcGIS credentials for guest access to Esri Maps Web part

Change Credentials

**Username:** *Guest*

Credentials should have limited privileges and credit consumption. Do not enter credentials for an admin account.

☒ Start session with guest signed in by default

##### Note:

- If you are using Internet Explorer and the **Sign In** window appears but is blank, try the following:
  1. In the Internet Explorer **Internet Options** dialog box, select the **Security** tab and select **Trusted Sites**.
  2. Check **Enable Protected Mode**.
  3. Click the **Sites** button and add [https://\\*.arcgis.com](https://*.arcgis.com) or your portal.
  4. Restart Internet Explorer.
- If you receive the following message: "Unable to obtain master key," follow the steps below to generate a key within the SharePoint Secure Store service:
  1. On the **Central Administration** home page, in the **Application Management** section, click **Manage service applications**.
  2. Click the **Secure Store Service** link.
  3. Click **Generate New Key**.

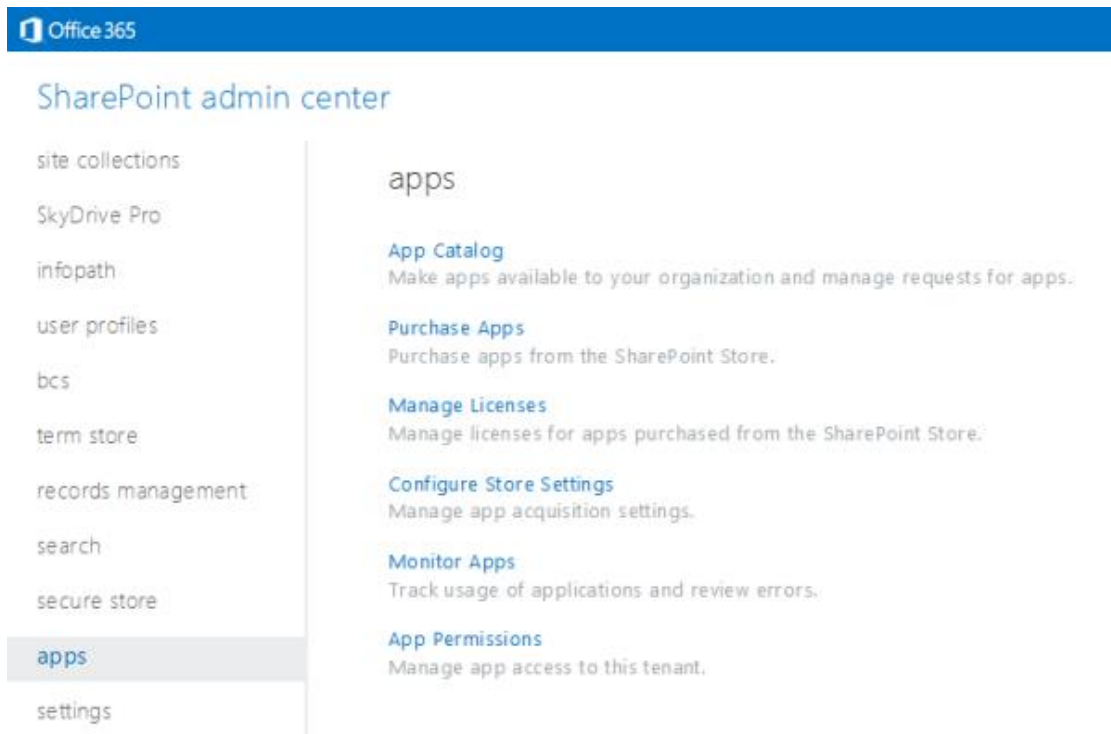
- Portals for ArcGIS configured with SAML will need to sign into App Configuration using a built-in user and then change the credentials to then sign in using the SAML username and password.
  - Use Firefox or Chrome when setting the App Configuration credentials on SharePoint 2010 for IWA, PKI or LDAP portals.
5. Enter the appropriate credentials and click **OK**.
  6. If you would like the Esri Maps Web Part to automatically sign users in as a guest check on the checkbox for **Start session with guest signed in by default**.

## Install the SharePoint Online apps

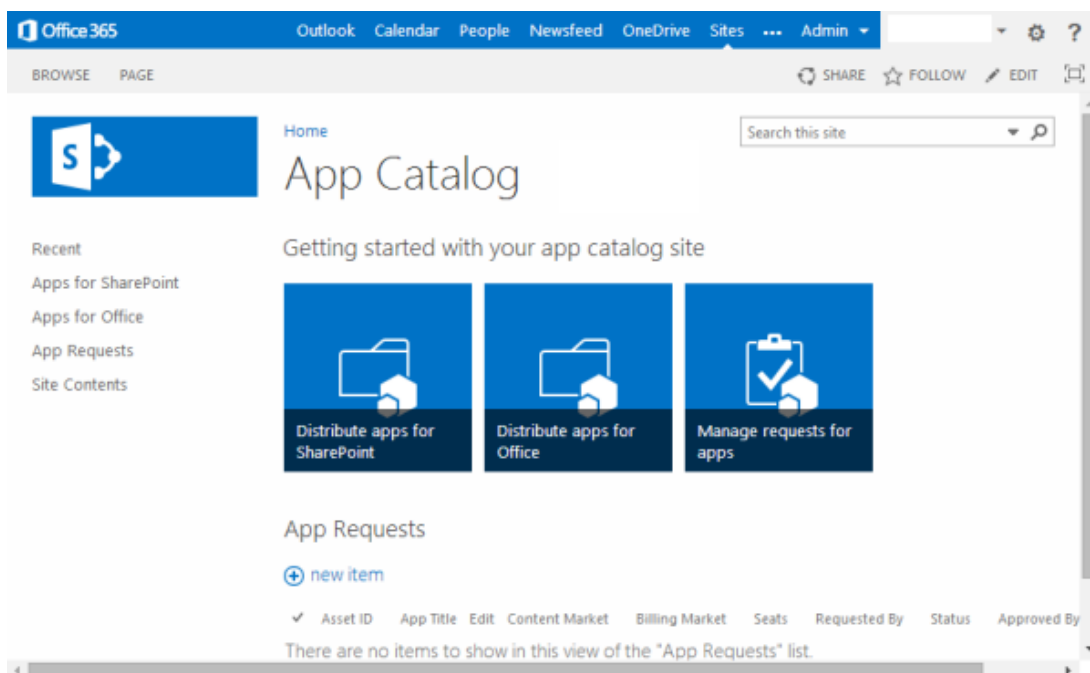
Esri Maps for SharePoint Online includes two separate apps, the Esri Maps Map App and the Esri Maps Locate Workflow App. Download and save each file to a location on disk prior to installing. As an admin for the SharePoint site, you need to include these files in the App Catalog and then add the apps to the desired site collections. Once the apps have been added to the site collections and configured, users with rights to add workflows to lists will be able to add the Locate Workflow and users with rights to create pages and add app parts will be able to add the Map App.

1. Download both Esri Maps for SharePoint apps and save to a location on disk.

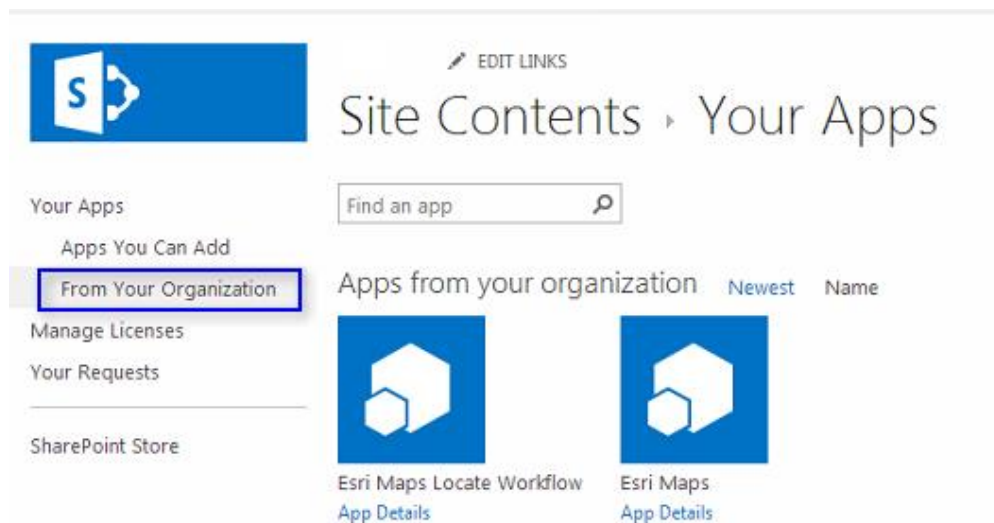
2. Navigate to the SharePoint admin center and click apps on the left menu.



3. Click **App Catalog** under apps in the SharePoint admin center. The AppCatalog page of the SharePoint site appears.



4. Click **Apps for SharePoint** in the menu on the left of the AppCatalog to display the Apps for SharePoint list.
5. Click new app and in the dialog box that appears, browse to the saved Esri Maps App or Esri Maps Workflow App. The app has an extension of ".app". Click **OK**.
6. Navigate to the desired site collection and click Settings (gear button). Click **Add an App**.
7. Click **From Your Organization** under **Your Apps** in the Quick Launch menu.



8. Click the Esri Maps app or Esri Maps Locate Workflow app under **Apps from your organization** and click **Trust It**. The app is now listed in the Site Contents.

## Configure the Esri Maps Apps

### Note:

Esri Maps for SharePoint Online supports connections to ArcGIS Online; it does not currently support connections to Portal for ArcGIS. By default, Esri Maps for SharePoint Online points to [www.arcgis.com](http://www.arcgis.com) for ArcGIS Online. If you need to connect to a subdomain for Enterprise logins, click Sign in with your enterprise login, when viewing the map or running the Locate Workflow, and enter the applicable subdomain.

### **Enable the workflow app**

1. Navigate to the site's **Site Contents** page.
2. Click **Esri Maps Locate Workflow**.
3. Under the **Workflow Configuration** heading, click **Enable** and if prompted, enter credentials.

### **Set the Guest Access credentials**

Sometimes you may want members of your organization to view the Esri Maps Web Part without signing into ArcGIS. To do so, you can set the Guest Access credentials. Features that consume organizational credits will be charged against the account that you set here. Users signed in as a guest will have limited access to the Esri Maps Web Part and will need to sign in using a named user account to share maps and layers to the organization.

1. Navigate to the site's **Site Contents** page.
2. Click **Esri Maps Locate Workflow**.
3. Under the **Guest Login** heading, click **Configure login**.
4. Click **Enable**.
5. Click **Set Credentials**
6. Enter the appropriate credentials and click **OK**.
7. If you would like the Esri Maps Web Part to automatically sign users in as a guest check on the checkbox for **Start session with guest signed in by default**.

## Guest Access

This will allow members of your organization to view maps without signing in to ArcGIS. All features that consume organization credits will use these credentials. Certain features that require a user to sign in, such as sharing, will be disabled.

Enable guest access

Disable

*Enabled*

### Set ArcGIS credentials for guest access to Esri Maps Web part

Change Credentials

**Username:** *Guest*

Credentials should have limited privileges and credit consumption. Do not enter credentials for an admin account.

☒ Start session with guest signed in by default

8. Navigate to the site's **Site Contents** page.
9. Click **Esri Maps**.
10. Repeat steps 3 to 7 with the same credentials.