

Esri Maps for SharePoint

تاغل مزح رشن



3
Copyright information 5

ةغللا ةمزح رشن

📄: عظة حالم

تأغلل اددعتم مدعلا تاذا Esri Maps for SharePoint

[illegible]

غلڊلاپ Esri Maps for SharePoint صرن ضرع مٽيو ، Esri Maps for SharePoint رشن دن ع ،جشن مل تي بيٽ عم ٽي زي لڄن ال ا غلڊا جمن ربل ا معدني
 غلڊا غلڊا قمزح رشن ج جي ،ٽي زي لڄن ال ا ري غ غلڊا ي ا ضرع ني ڪم پتل .غلڊا قمزح جنومن مادختساب ڀرڻ خال ا تا غلڊا عي م ج معد مٽي .آي ٽا ڦلٽ ٽي زي لڄن ال ا
 سي اس ال Esri Maps for SharePoint رشن ڀل ا غلڊا .

عم Esri Maps for SharePoint، على اءا تااغللا نم ددع يال تااغللا مزح رشن مدي دق. (wsp فلام) SharePoint لء مءز اءراباءاب ءغل مءز لك عءوز مءي
 وء، عءوملا وء، ءفصلا يء تااغللا فئبرعء نك مءي، SharePoint لء اء. ءءءءم تااغل Esri Maps for SharePoint ءءبءء مءءي دق، اءءو SharePoint
 ءغل ArcGIS طءارء عءوم لء ءو Esri طءارء عءوم دءءء لء مء رءس سءك عي اءن يء، ءفصلا ءغل Map Web Parts سءك عءس. عءوملا عءوم ءم يوءءسم
 عءوملا عءوم ءم وء يء ساال عءوملا نم SharePoint يء عءوملا وء ءفصلا ءغل لء ءءء، اءى اءلء. عءوملا

ةغل ةمزح رشن

دیتا اب مق Esri Maps for SharePoint ةغل قمزح رشنل

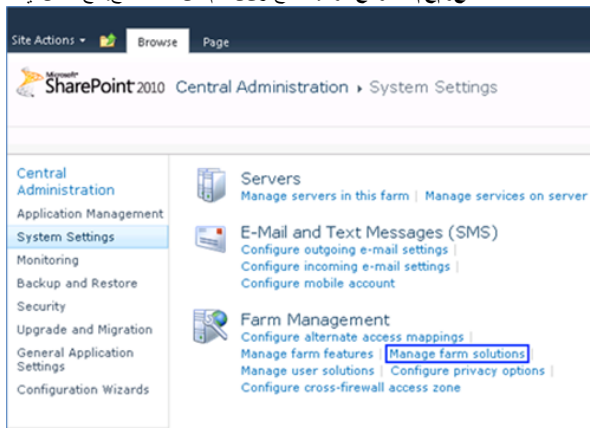
نقطة الملاحظة: تمزج تخطيطات لبق Esri Maps for SharePoint تخطيطات بجي
ة غل.

ت: او ط خ ل ا

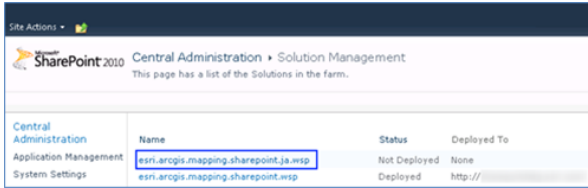
- تتطلب تثبيت مبيتي شايح مداخل الابل Esri Maps for SharePoint ة قمل مزلح لىل عىوت تحت يتيلا (wsp. فلم). SharePoint لىل مزلح ظلفا. 1. SharePoint.
4. قوطل ال يىل ممل ملىل عىوت ال اذل ظل ال.
2. مداخل ال لم عىي SharePoint تي قىوت تامل ملىل SharePoint قوالل نل نل قىل قىل.
3. SharePoint Management Shell. حىل.
- 2013 (و) 2010 SharePoint تامل نل > جمل رىل ال لك > ألبا لىل لىل قىل**
- ةىر ال ال تامل ال ملىل ملىل رمل ال ال ملىل حىل، (UAC) ملىل ملىل لىل يىل ملىل نىل ملىل ملىل ال.
- لىل ال قوطل ال يىل ال رمل ال ملىل ملىل ال رمل ال نىل، SharePoint Management Shell يىل.

```
stsadm -o addsolution -filename "<path to language pack wsp file>"
```

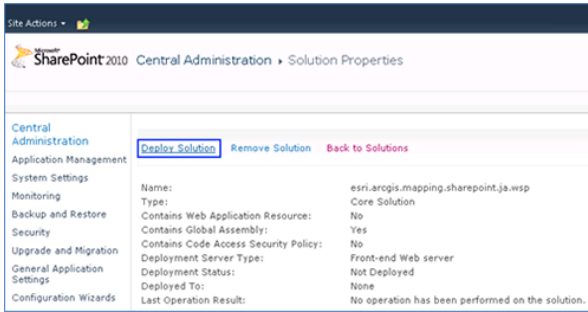
5. ب.يو ضرر عتسم SharePoint يف فيز لفرمل اقرادال عقوم حتفا ،لحل ا قفاضا دعب.
6. ا مظنل ا تادادع ا لى رونا ،فيز لفرمل اقرادال عقوم ا نيس يى زل ا حفاصل ا يف.
7. ة عوم لى لولل اقرادال لى رونا ،ا مظنل ا تادادع ا حفاصل ا يف.



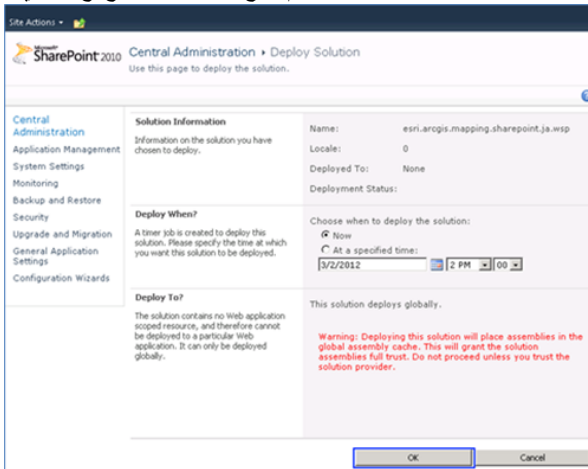
8. غلغل قمزح ىلع يوتحي يذلا wsp فلم مسا ىلع رقنا ،لولحل ارادا ءحفص يف. esri.arcgis.mapping.sharepoint.<culture code>.wsp قىسن تب فلمل مسا



9. رشنالاح ىلع رقنا، لولجالا صئاصخ ةحفص يف.



10. قفاوم ىلع رقنا، رشنالاح ةحفص يف.



11. يلااتلا رمالا ذيفنتب SharePoint مداخل يف IIS ليغشت دعال، رمالا هجوم مداخلتساب.

iisreset

وأ عقوملا وأ ةحفصلال نييعت متي نا ةطيرش ةغللا قمزح ةغل مداخلتساب Esri Maps for SharePoint تانوكم ضرع مديس، لجالا رشن دعب ةغللا مذل تانوكملل مديسوتحت يتلا عقاوملا ةجومم

تظحالم سكرنتس. قديجلال ةغللا تاغللالا قمزح رشن لبق امظفحو امن يوكت مت يتلا Map Web Parts سكرنتس نل ةغللا قمزح رشن دعب اهئاشن! مت يتلا Map Web Parts ىلع قديجلال ةغللا

Copyright information

Copyright © 1995-2015 Esri

All rights reserved.

Published in the United States of America.

Visit Esri's [Copyright and Trademarks Web site](#)

The information contained in this document is the exclusive property of Environmental Systems Research Institute, Inc. (Esri), and any respective copyright owners. This work is protected under United States copyright law and other international copyright treaties and conventions.

No part of this work may be reproduced or transmitted for commercial purposes, in any form or by any means, electronic or mechanical, including photocopying and recording, or by any information storage or retrieval system, except as expressly permitted in writing by Esri. Requests by mail should be addressed to Director, Contracts and Legal, Esri, 380 New York Street, Redlands, California 92373-8100, USA.

U.S. Government Restricted/Limited Rights

Any software, documentation, and/or data delivered hereunder is subject to the terms of the License Agreement. The commercial license rights in the License Agreement strictly govern Licensee's use, reproduction, or disclosure of the software, data, and documentation. In no event shall the U.S. Government acquire greater than RESTRICTED/LIMITED RIGHTS. At a minimum, use, duplication, or disclosure by the U.S. Government is subject to restrictions as set forth in FAR §52.227-14 Alternates I, II, and III (DEC 2007); FAR §52.227-19(b) (DEC 2007) and/or FAR §12.211/12.212 (Commercial Technical Data/Computer Software); and DFARS §252.227-7015 (NOV 1995) (Technical Data) and/or DFARS §227.7202 (Computer Software), as applicable. Contractor/Manufacturer is Esri, 380 New York Street, Redlands, CA 92373-8100 USA.

Esri Trademarks

@esri.com, 3D Analyst, Address Coder, ArcAtlas, ArcCAD, ArcCatalog, ArcCOGO, ArcData, ArcDoc, ArcEdit, ArcEditor, ArcEurope, ArcExplorer, ArcExpress, ArcGIS, ArcGlobe, ArcGrid, ArcIMS, ARC/INFO, ArcInfo, ArcInfo Librarian, ArcLessons, ArcLocation, ArcLogistics, ArcMap, ArcNetwork, ArcNews, ArcObjects, ArcOpen, ArcPad, ArcPlot, ArcPress, ArcPy, ArcReader, ArcScan, ArcScene, ArcSchool, ArcScripts, ArcSDE, ArcSdl, ArcSketch, ArcStorm, ArcSurvey, ArcTIN, ArcToolbox, ArcTools, ArcUSA, ArcUser, ArcView, ArcVoyager, ArcWatch, ArcWeb, ArcWorld, ArcXML, Atlas GIS, AtlasWare, Avenue, BAO, Business Analyst, Business Analyst Online, BusinessMAP, CityEngine, CommunityInfo, Database Integrator, DBI Kit, EDN, Esri, Esri-Team GIS, Esri-The GIS Company, Esri-The GIS People, Esri-The GIS Software Leader, FormEdit, GeoCollector, Geographic Design System, Geography Matters, Geography Network, GIS by Esri, GIS Day, GIS for Everyone, GISData Server, JTX, Maplex, MapObjects, MapStudio, ModelBuilder, MOLE, MPS-Atlas, PLTS, Rent-a-Tech, SDE, SML, Sourcebook America, SpatialLABS, Spatial Database Engine, StreetMap, Tapestry, the ARC/INFO logo, the ArcGIS Explorer logo, the Esri globe logo, the Esri Press logo, the GIS Day logo, Water Writes, www.arcgis.com, www.esri.com, www.gisday.com, are trademarks, service marks, or registered marks in the United States, the European Community, or certain other jurisdictions. CityEngine is a registered trademark of Procedural AG and is distributed under license by Esri.

Other companies and products or services mentioned herein may be trademarks, service marks or registered marks of their respective mark owners.

You may have received Products or Services that include Graph Editor Toolkit, Copyright © 1992-1999 Tom Sawyer Software, Berkeley, California, All Rights Reserved and Tom Sawyer Visualization Ver. 8.0 Copyright © 1992-2009 Tom Sawyer Software, Berkeley, California, All Rights Reserved.