

Deploy Esri Maps for SharePoint Language Packs



Table of Contents

Language pack deployment 3

Copyright information 5

Language pack deployment

Note:

Esri Maps for SharePoint multilingual support

Esri Maps for SharePoint is supported in the following languages: Arabic, Chinese (simplified), Czech, Danish, Dutch, English, Estonian, Finnish, French, German, Greek, Hebrew, Italian, Japanese, Korean, Latvian, Lithuanian, Norwegian, Polish, Portuguese (Brazil), Portuguese (Portugal), Romanian, Russian, Spanish, Swedish, Thai, Turkish, and Vietnamese.

English is supported natively with the product installation; when Esri Maps for SharePoint is deployed, text within the Esri Maps for SharePoint components will be displayed in English by default. All other languages are supported using a language pack model. To enable the display of any supported non-English language, you must deploy the language pack for that language on top of the main Esri Maps for SharePoint deployment.

Each language pack is distributed as a SharePoint solution package (.wsp file). Language packs for any number of locales may be deployed on top of Esri Maps for SharePoint, so that, as with SharePoint itself, one Esri Maps for SharePoint installation may support multiple languages. Within SharePoint, languages can be defined at the page, site, or site collection level. The Map Web Parts will reflect the language of the containing page, while the Esri Maps Locate workflow and Esri Maps Location field will reflect the language of the containing site. By default, the language of a page or site in SharePoint is inherited from the parent site or site collection.

Deploy a language pack

To deploy an Esri Maps for SharePoint language pack, do the following:

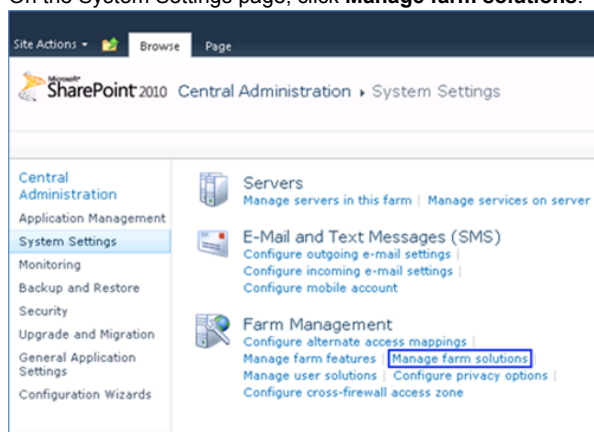
Note: Esri Maps for SharePoint must be installed before you can install a language pack.

Steps:

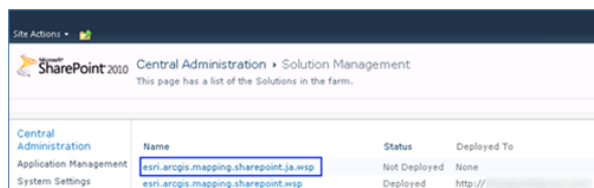
1. Save the SharePoint solution package (.wsp file) containing the Esri Maps for SharePoint language pack on the server where SharePoint is installed.
Note this location for use in Step 4.
2. Verify that the SharePoint Administration and SharePoint Timer services are running on the server.
3. Open the SharePoint Management Shell.
Go to **Start > All Programs > SharePoint 2010 (or 2013) Products**
If **User Access Control (UAC)** is enabled, open the command prompt using administrative privileges.
4. In the SharePoint Management Shell, execute the following command, using the path noted in the first step.

```
stsadm -o addsolution -filename "<path to language pack wsp file>"
```

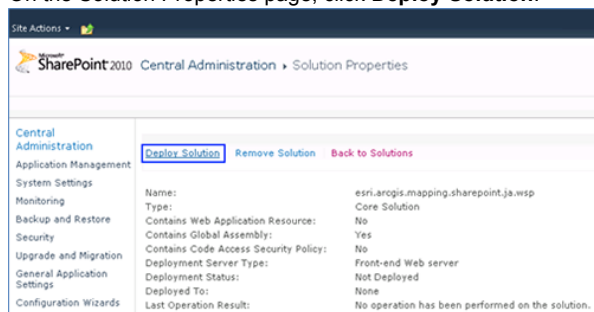
5. After you have added the solution, open the SharePoint Central Administration site in a web browser.
6. On the Central Administration site home page, click **System settings**.
7. On the System Settings page, click **Manage farm solutions**.



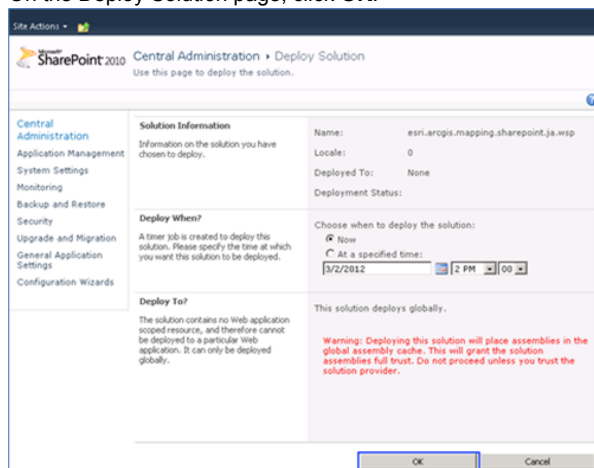
8. On the Solution Management page, click the name of the wsp file that contains the language pack. The file name is in the format `esri.arcgis.mapping.sharepoint.<culture code>.wsp`.



9. On the Solution Properties page, click **Deploy Solution**.



10. On the Deploy Solution page, click **OK**.



11. Using a command prompt, restart IIS on the SharePoint server by executing the following command:

```
iisreset
```

After the solution is deployed, Esri Maps for SharePoint components will automatically be displayed using the language of the language pack, provided that the page, site, or site collection containing those components is also set to that language.

Note: Map Web Parts that have been configured and saved prior to deployment of the language pack will not reflect the new language. The new language will apply only to Map Web Parts created after you deploy the language pack.

Copyright information

Copyright © 1995-2015 Esri

All rights reserved.

Published in the United States of America.

Visit Esri's [Copyright and Trademarks Web site](#)

The information contained in this document is the exclusive property of Environmental Systems Research Institute, Inc. (Esri), and any respective copyright owners. This work is protected under United States copyright law and other international copyright treaties and conventions.

No part of this work may be reproduced or transmitted for commercial purposes, in any form or by any means, electronic or mechanical, including photocopying and recording, or by any information storage or retrieval system, except as expressly permitted in writing by Esri. Requests by mail should be addressed to Director, Contracts and Legal, Esri, 380 New York Street, Redlands, California 92373-8100, USA.

U.S. Government Restricted/Limited Rights

Any software, documentation, and/or data delivered hereunder is subject to the terms of the License Agreement. The commercial license rights in the License Agreement strictly govern Licensee's use, reproduction, or disclosure of the software, data, and documentation. In no event shall the U.S. Government acquire greater than RESTRICTED/LIMITED RIGHTS. At a minimum, use, duplication, or disclosure by the U.S. Government is subject to restrictions as set forth in FAR §52.227-14 Alternates I, II, and III (DEC 2007); FAR §52.227-19(b) (DEC 2007) and/or FAR §12.211/12.212 (Commercial Technical Data/Computer Software); and DFARS §252.227-7015 (NOV 1995) (Technical Data) and/or DFARS §227.7202 (Computer Software), as applicable. Contractor/Manufacturer is Esri, 380 New York Street, Redlands, CA 92373-8100 USA.

Esri Trademarks

@esri.com, 3D Analyst, Address Coder, ArcAtlas, ArcCAD, ArcCatalog, ArcCOGO, ArcData, ArcDoc, ArcEdit, ArcEditor, ArcEurope, ArcExplorer, ArcExpress, ArcGIS, ArcGlobe, ArcGrid, ArcIMS, ARC/INFO, ArcInfo, ArcInfo Librarian, ArcLessons, ArcLocation, ArcLogistics, ArcMap, ArcNetwork, ArcNews, ArcObjects, ArcOpen, ArcPad, ArcPlot, ArcPress, ArcPy, ArcReader, ArcScan, ArcScene, ArcSchool, ArcScripts, ArcSDE, ArcSdl, ArcSketch, ArcStorm, ArcSurvey, ArcTIN, ArcToolbox, ArcTools, ArcUSA, ArcUser, ArcView, ArcVoyager, ArcWatch, ArcWeb, ArcWorld, ArcXML, Atlas GIS, AtlasWare, Avenue, BAO, Business Analyst, Business Analyst Online, BusinessMAP, CityEngine, CommunityInfo, Database Integrator, DBI Kit, EDN, Esri, Esri-Team GIS, Esri-The GIS Company, Esri-The GIS People, Esri-The GIS Software Leader, FormEdit, GeoCollector, Geographic Design System, Geography Matters, Geography Network, GIS by Esri, GIS Day, GIS for Everyone, GISData Server, JTX, Maplex, MapObjects, MapStudio, ModelBuilder, MOLE, MPS-Atlas, PLTS, Rent-a-Tech, SDE, SML, Sourcebook America, SpatialLABS, Spatial Database Engine, StreetMap, Tapestry, the ARC/INFO logo, the ArcGIS Explorer logo, the Esri globe logo, the Esri Press logo, the GIS Day logo, Water Writes, www.arcgis.com, www.esri.com, www.gisday.com, are trademarks, service marks, or registered marks in the United States, the European Community, or certain other jurisdictions. CityEngine is a registered trademark of Procedural AG and is distributed under license by Esri.

Other companies and products or services mentioned herein may be trademarks, service marks or registered marks of their respective mark owners.

You may have received Products or Services that include Graph Editor Toolkit, Copyright © 1992-1999 Tom Sawyer Software, Berkeley, California, All Rights Reserved and Tom Sawyer Visualization Ver. 8.0 Copyright © 1992-2009 Tom Sawyer Software, Berkeley, California, All Rights Reserved.