

Deploy ArcGIS Maps for SharePoint language packs



Table of Contents

Language pack deployment	3
Copyright information	5

Language pack deployment

ArcGIS Maps for SharePoint multilingual support


ArcGIS Maps for SharePoint is supported in the following languages: Arabic, Chinese (simplified), Chinese (Traditional Hong Kong), Chinese (Traditional Taiwan), Czech, Danish, Dutch, English, Estonian, Finnish, French, German, Greek, Hebrew, Indonesian, Italian, Japanese, Korean, Latvian, Lithuanian, Norwegian, Polish, Portuguese (Brazil), Portuguese (Portugal), Romanian, Russian, Spanish, Swedish, Thai, Turkish, and Vietnamese.

English is supported natively with the product installation; when ArcGIS Maps for SharePoint is deployed, text within the ArcGIS Maps for SharePoint components will be displayed in English by default. All other languages are supported using a language pack model. To enable the display of any supported non-English language, you must deploy the language pack for that language on top of the main ArcGIS Maps for SharePoint deployment.

Each language pack is distributed as a SharePoint solution package (.wsp file). Language packs for any number of locales may be deployed on top of ArcGIS Maps for SharePoint, so that, as with SharePoint itself, one ArcGIS Maps for SharePoint installation may support multiple languages. Within SharePoint, languages can be defined at the page, site, or site collection level. The Map Web Parts will reflect the language of the containing page, while the ArcGIS Maps Locate workflow and ArcGIS Location field will reflect the language of the containing site. By default, the language of a page or site in SharePoint is inherited from the parent site or site collection.

Deploy a language pack

To deploy an ArcGIS Maps for SharePoint language pack, do the following:

 **Note:** ArcGIS Maps for SharePoint must be installed before you can install a language pack.

1. Save the SharePoint solution package (.wsp file) containing the ArcGIS Maps for SharePoint language pack on the server where SharePoint is installed.
Note this location for use in Step 4.

2. Verify that the SharePoint Administration and SharePoint Timer services are running on the server.

3. Open the SharePoint Management Shell.

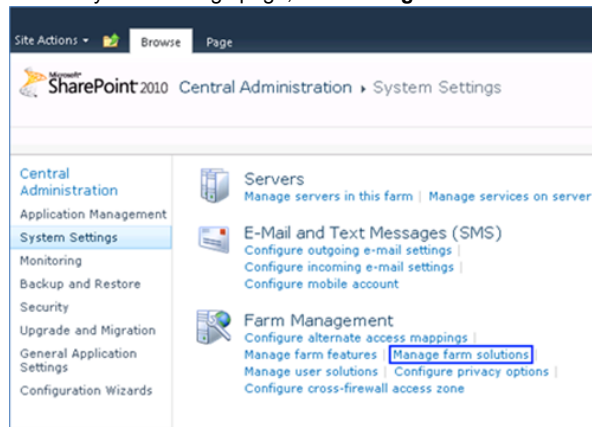
Go to **Start > All Programs > SharePoint 2010 (or 2013 or 2016) Products**

If **User Access Control (UAC)** is enabled, open the command prompt using administrative privileges.

4. In the SharePoint Management Shell, execute the following command, using the path noted in the first step.

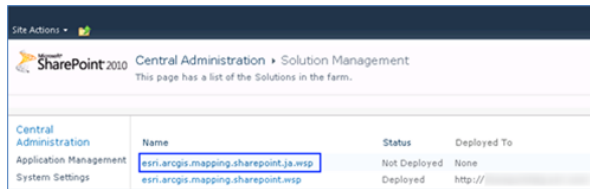
```
stsadm -o addsolution -filename "<path to language pack wsp file>"
```

5. After you have added the solution, open the SharePoint Central Administration site in a web browser.
6. On the Central Administration site home page, click **System settings**.
7. On the System Settings page, click **Manage farm solutions**.

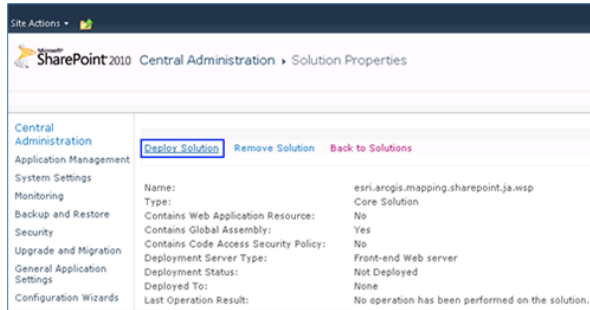


8. On the Solution Management page, click the name of the wsp file that contains the language pack.
The file name is in the format `esri.arcgis.mapping.sharepoint.<culture code>.wsp`.

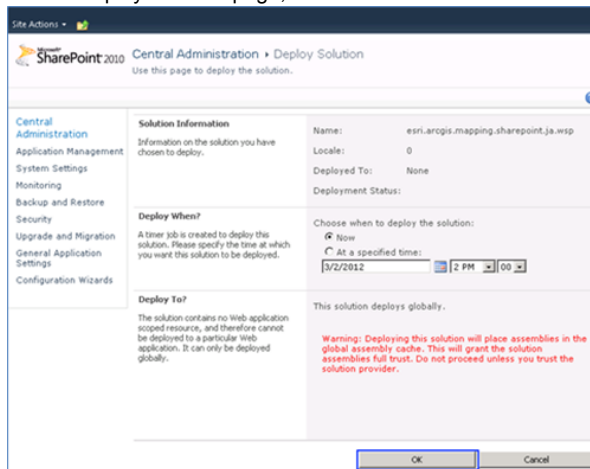
Deploy ArcGIS Maps for SharePoint language packs



9. On the Solution Properties page, click **Deploy Solution**.



10. On the Deploy Solution page, click **OK**.



11. Using a command prompt, restart IIS on the SharePoint server by executing the following command:

```
iisreset
```

After the solution is deployed, ArcGIS Maps for SharePoint components will automatically be displayed using the language of the language pack, provided that the page, site, or site collection containing those components is also set to that language.

Note: Map Web Parts that have been configured and saved prior to deployment of the language pack will not reflect the new language. The new language will apply only to Map Web Parts created after you deploy the language pack.

Copyright information

Copyright © 1995-2017 Esri

All rights reserved

Published in the United States of America.

US GOVERNMENT CUSTOMER

The Products are commercial items, developed at private expense, provided to Customer under this Agreement. If Customer is a US government entity or US government contractor, Esri licenses or provides subscriptions to Customer in accordance with this Agreement under FAR Subparts 12.211/12.212 or DFARS Subpart 227.7202. Esri Data and Online Services are licensed or subscribed under the same DFARS Subpart 227.7202 policy as commercial computer software for acquisitions made under DFARS. Products are subject to restrictions, and this Agreement strictly governs Customer's use, modification, performance, reproduction, release, display, or disclosure of Products. Agreement provisions that are inconsistent with federal law regulation will not apply. A US government Customer may transfer Software to any of its facilities to which it transfers the computer(s) on which it has installed such Software. If any court, arbitrator, or board holds that a US government Customer has greater rights to any portion of the Products under applicable public procurement law, such rights will extend only to the portions affected.

Esri Trademarks

@esri.com, 3D Analyst, Address Coder, ArcAtlas, ArcCAD, ArcCatalog, ArcCOGO, ArcData, ArcDoc, ArcEdit, ArcEditor, ArcEurope, ArcExplorer, ArcExpress, ArcGIS, ArcGlobe, ArcGrid, ArcIMS, ARC/INFO, ArcInfo, ArcInfo Librarian, ArcLessons, ArcLocation, ArcLogistics, ArcMap, ArcNetwork, ArcNews, ArcObjects, ArcOpen, ArcPad, ArcPlot, ArcPress, ArcPy, ArcReader, ArcScan, ArcScene, ArcSchool, ArcScripts, ArcSDE, ArcSdl, ArcSketch, ArcStorm, ArcSurvey, ArcTIN, ArcToolbox, ArcTools, ArcUSA, ArcUser, ArcView, ArcVoyager, ArcWatch, ArcWeb, ArcWorld, ArcXML, AtlasGIS, AtlasWare, Avenue, BAO, Business Analyst, Business Analyst Online, BusinessMAP, CityEngine, CommunityInfo, Database Integrator, DBI Kit, Drone2Map, EDN, Esri, Esri-Team GIS, Esri-The GIS Company, Esri-The GIS People, Esri-The GIS Software Leader, FormEdit, GeoCollector, Geographic Design System, Geography Matters, Geography Network, GIS by Esri, GIS Day, GIS for Everyone, GISData Server, JTX, Maplex, MapObjects, MapStudio, ModelBuilder, MOLE, MPS-Atlas, PLTS, Rent-a-Tech, SDE, SML, Sourcebook America, SpatialLABS, Spatial Database Engine, StreetMap, Tapestry, The Science of Where, the ARC/INFO logo, the ArcGIS Explorer logo, the Esri globe logo, the Esri Press logo, the GIS Day logo, Water Writes, www.arcgis.com, www.esri.com, www.gisday.com, are trademarks, service marks, or registered marks in the United States, the European Community, or certain other jurisdictions. CityEngine is a registered trademark of Procedural AG and is distributed under license by Esri.

Other companies and products or services mentioned herein may be trademarks, service marks or registered marks of their respective mark owners.

You may have received Products or Services that include Graph Editor Toolkit, Copyright © 1992-1999 Tom Sawyer Software, Berkeley, California, All Rights Reserved and Tom Sawyer Visualization Ver. 8.0 Copyright © 1992-2009 Tom Sawyer Software, Berkeley, California, All Rights Reserved.